

SANTA MONICA

PROPER

HOTEL

PROPER GATHERINGS

Santa Monica Proper Hotel offers more than 24,000 square feet of Kelly Wearstler designed flexible space on the Westside, including four meeting rooms, ballroom, courtyards and an expansive rooftop pool-deck-restaurant with unforgettable ocean views. The high-end services and

hospitality of the Proper events team are personalized with market-driven catering menus for indoor and outdoor meetings, weddings, special events, and private dining with distinction. Let our dedicated team of experts bring your visions to life. Anything less just wouldn't be Proper.

OUR SERVICES

CUISINE

Our culinary team offers customized food and beverage menus featuring locally sourced and sustainable ingredients rooted in health and wellness. Our approach focuses on personalized and specifically-curated menus that elevate group fare for a one-of-a-kind experience.

TECHNOLOGY

We can coordinate all your technology needs with our in-house dedicated support team. All spaces include fiber optic connectivity, and state-of-the-art audio-visual capabilities with programmable lighting.

PLANNING SERVICE

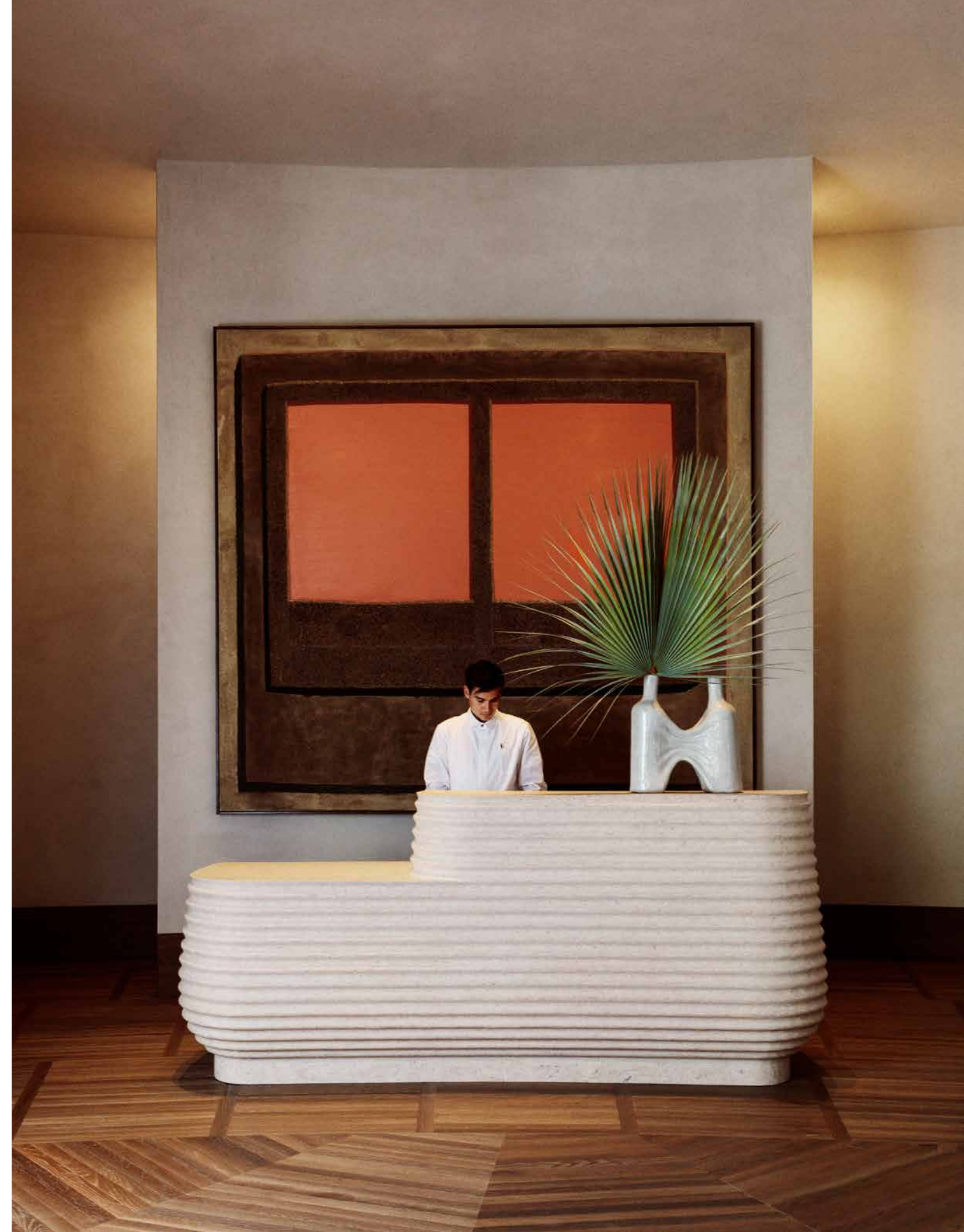
Allow our expert planning and banquet professionals to transform your meeting, conference or corporate retreat with unique services, custom menus and off-premise activities that reflect our coveted beachside location.

AMENITIES

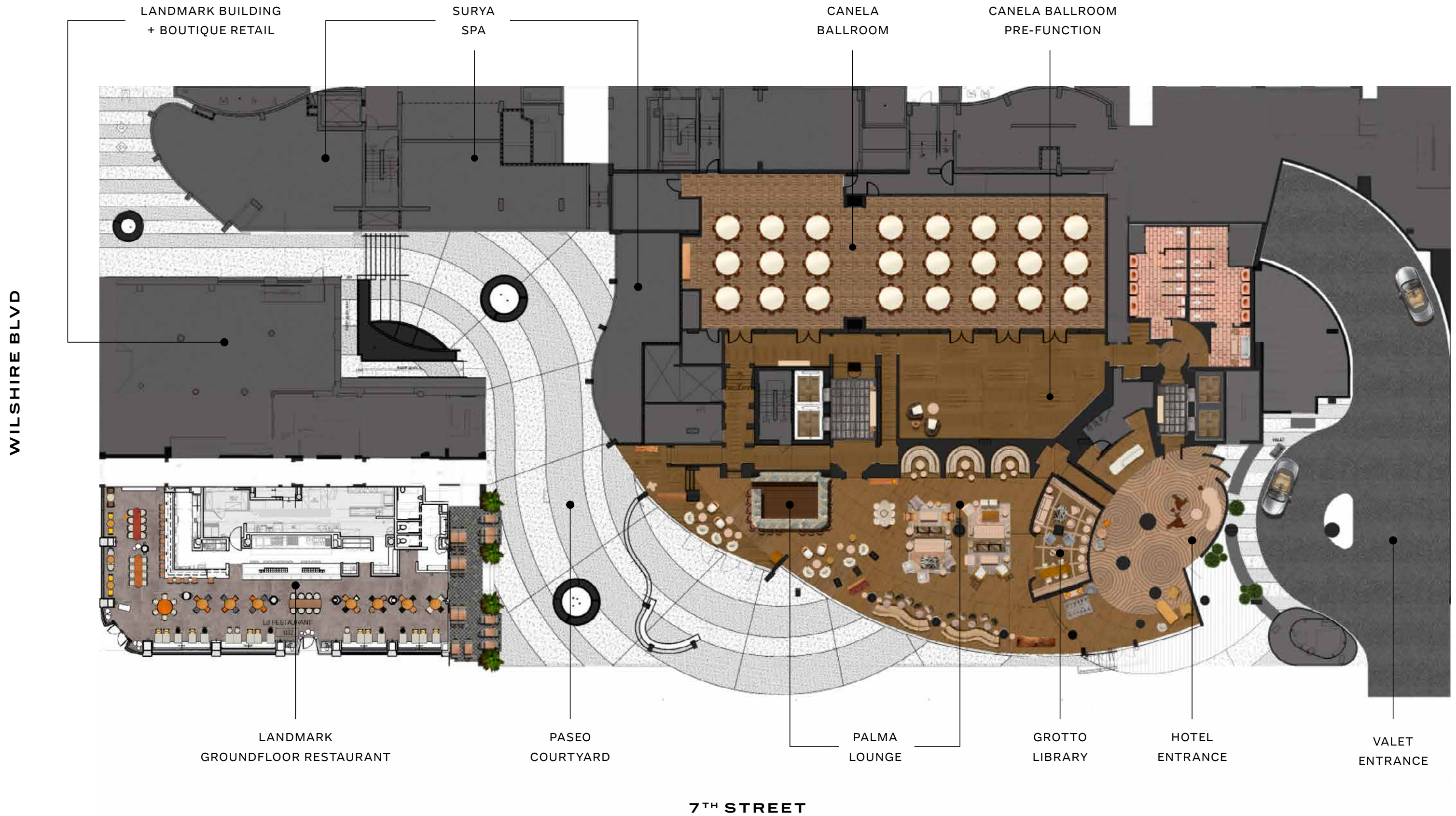
Inviting amenities include an original Ayurvedic Spa, 24/7 fully-equipped fitness center and the Westside's only rooftop pool with unmatched ocean views. Proper essentials include complimentary yoga, live DJs on the weekends and electric bikes to explore the neighborhood or bike path along the Pacific Ocean.

PROPER TOUCHES

Our flexible, indoor-outdoor spaces are thoughtfully designed and curated by Kelly Wearstler with custom art installations by emerging L.A. artists and an abundance of natural light.



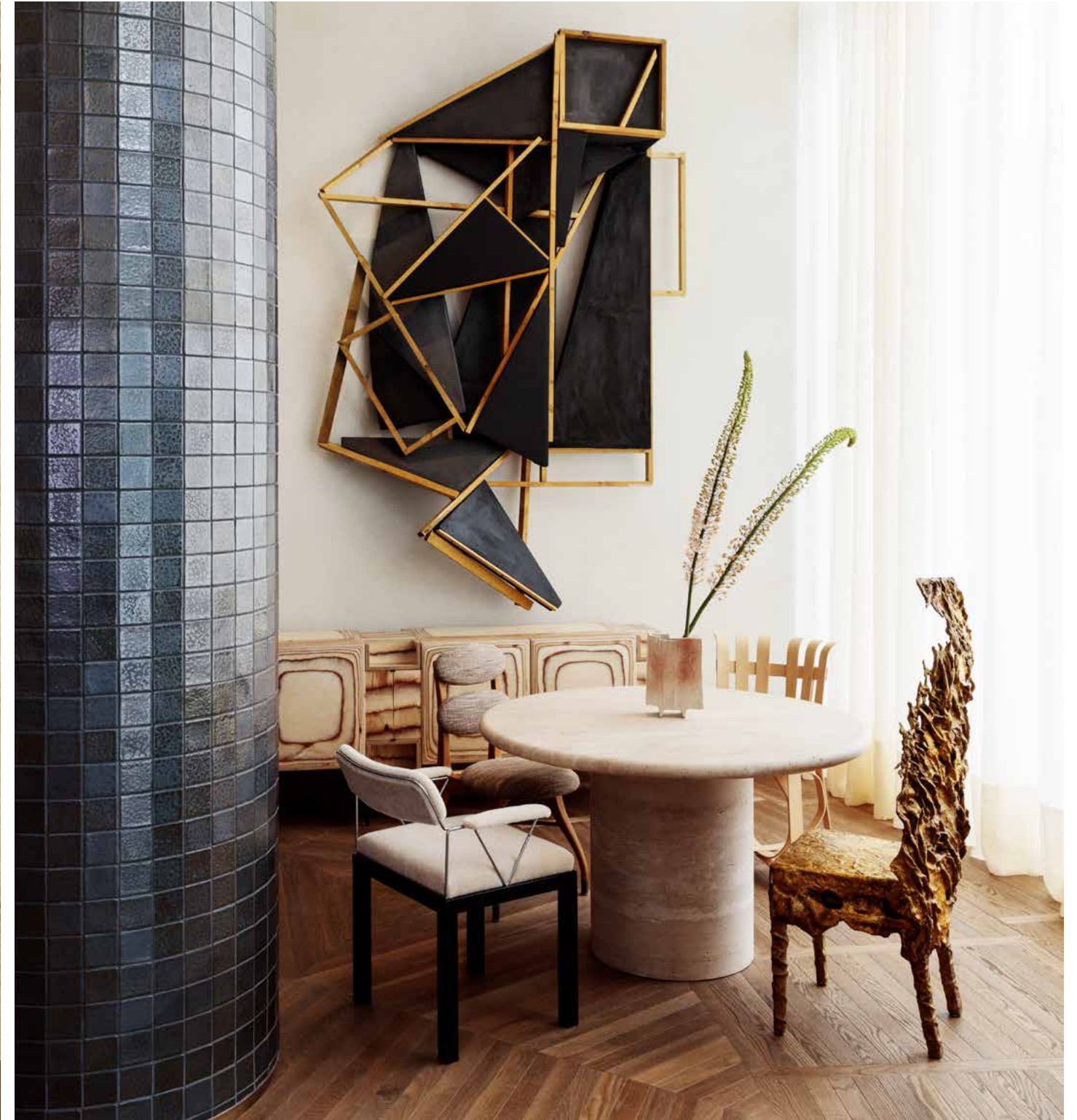
GROUND FLOOR



WILSHIRE BLVD

7TH STREET

GROUND FLOOR

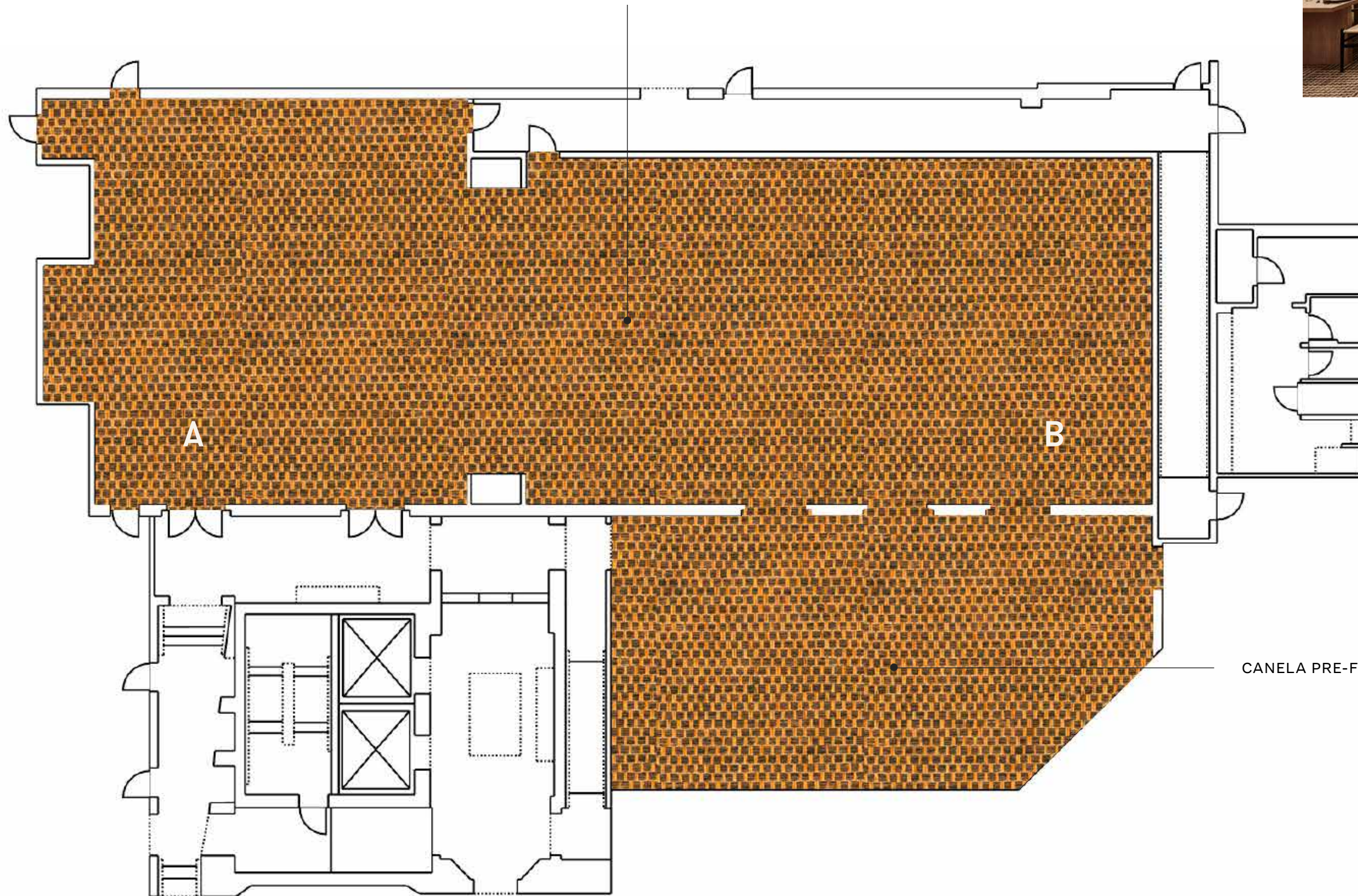


PALMA
RESTAURANT AND LOUNGE



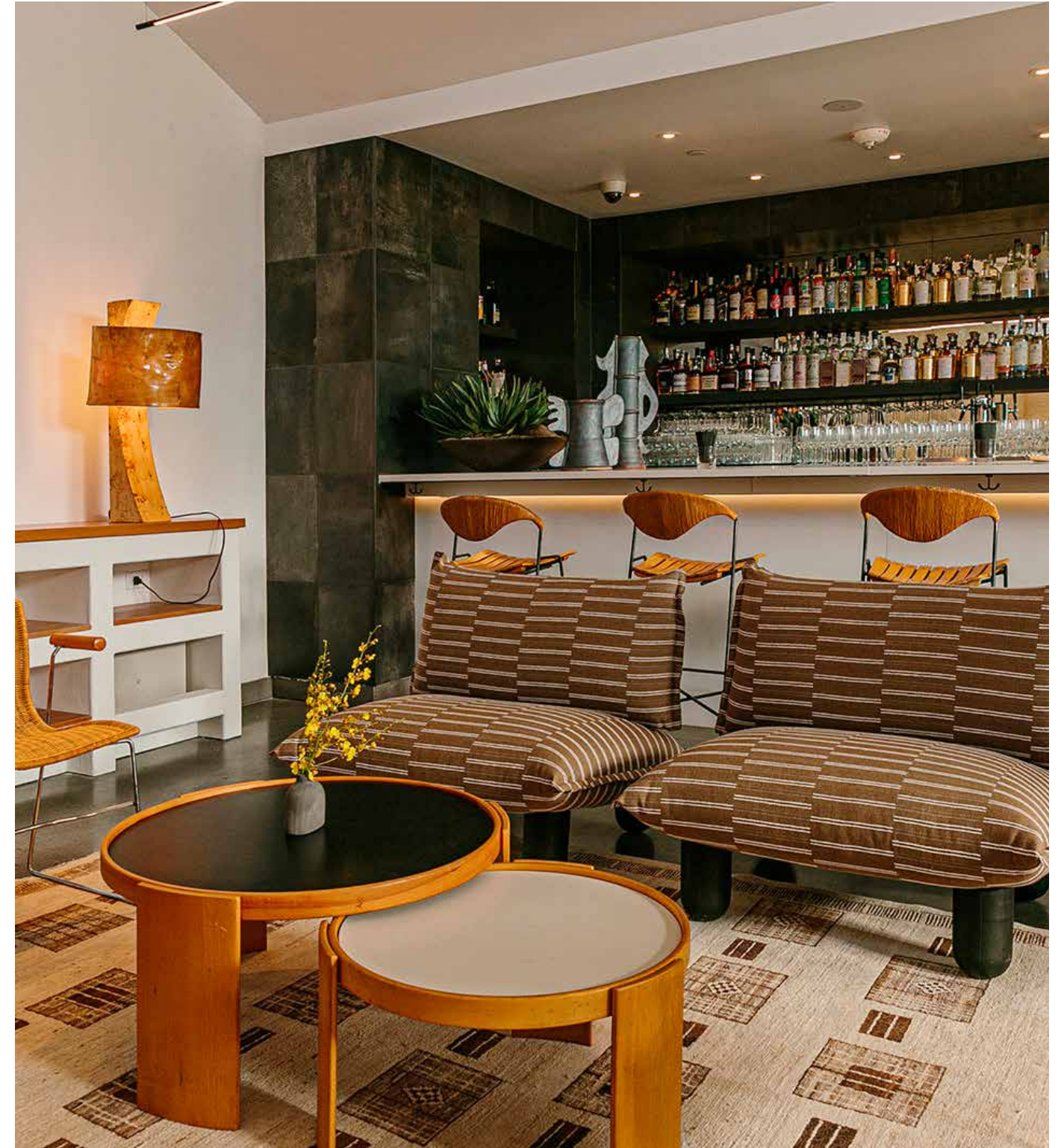
CANELA BALLROOM

CANELA BALLROOM



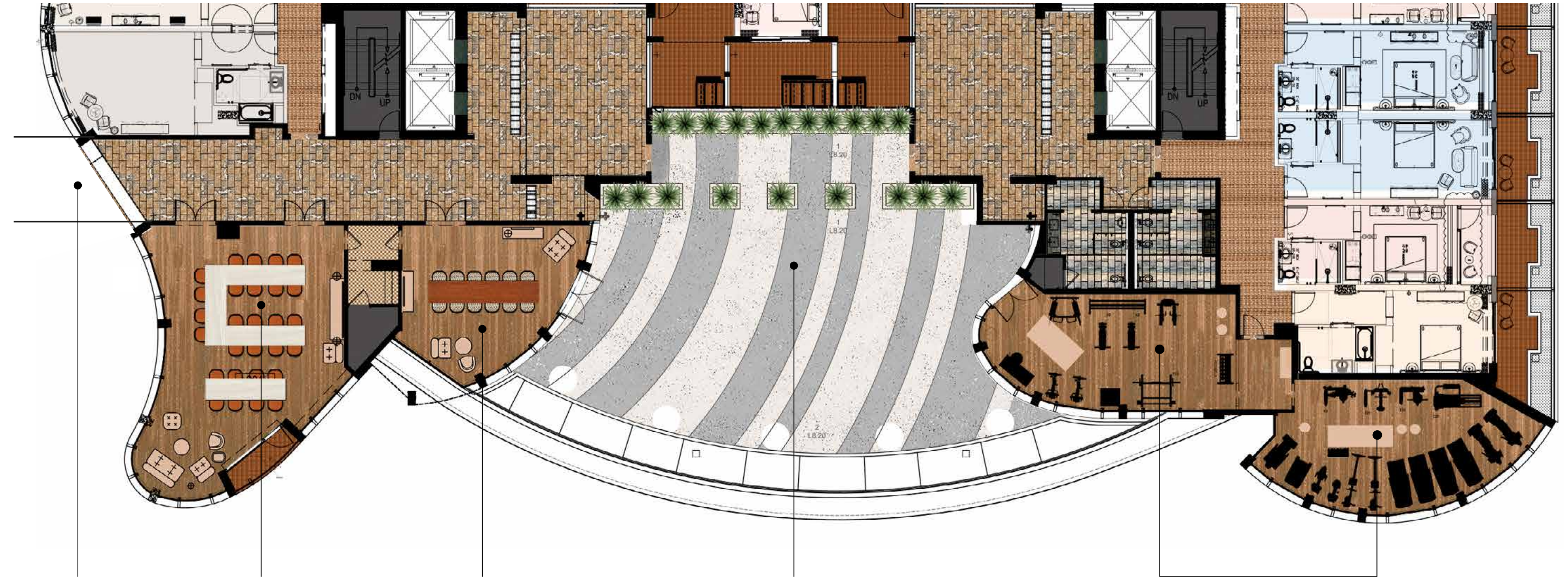
CANELA PRE-FUNCTION

SIETE



SECOND FLOOR

WILSHIRE BLVD



WALKWAY BRIDGE

CONVERSE
MEETING ROOM

SURGE
BOARDROOM

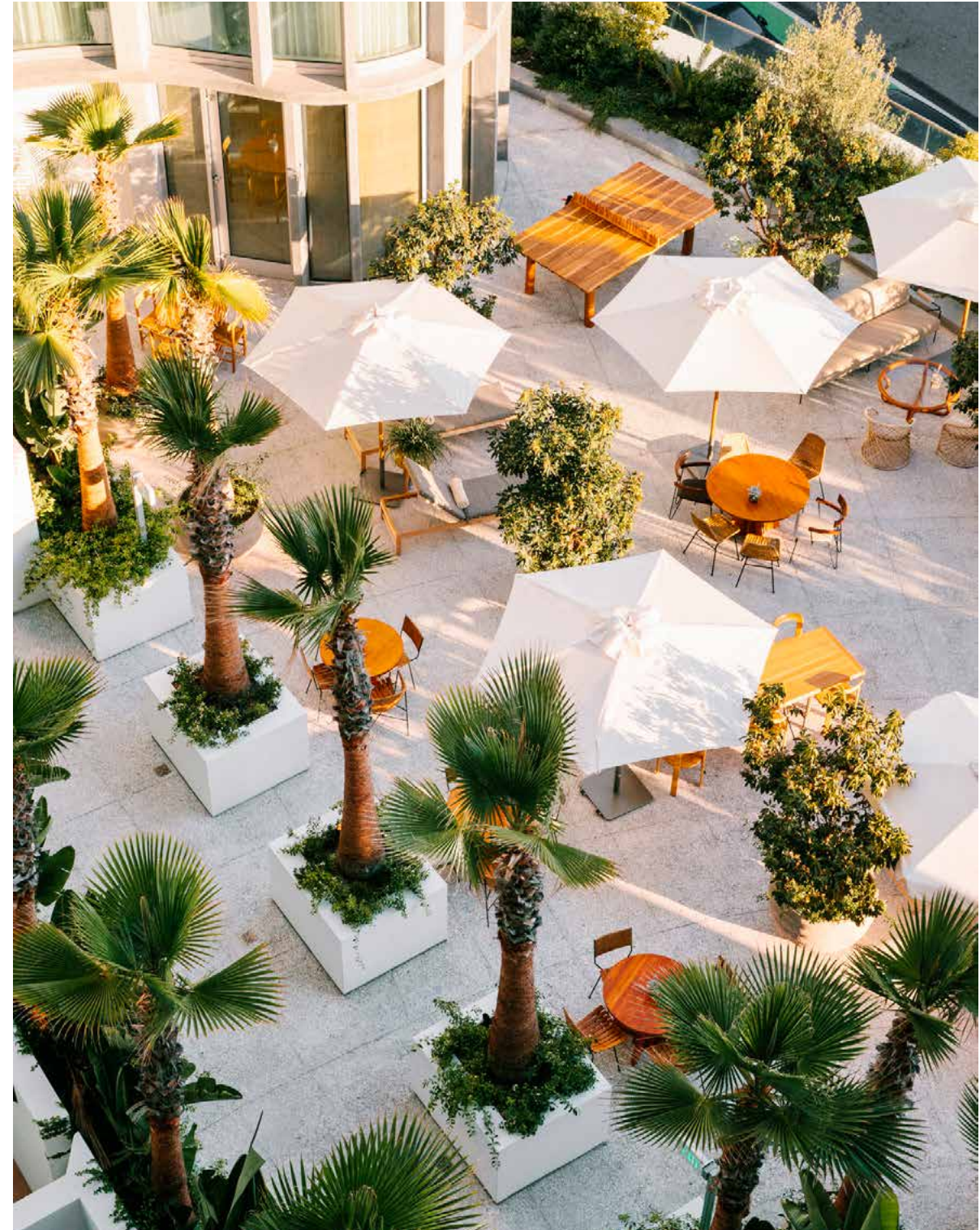
OLEA GARDEN TERRACE

HELIOS FITNESS

7TH STREET

SECOND FLOOR

OLEA GARDEN TERRACE | SURGE | CONVERGE

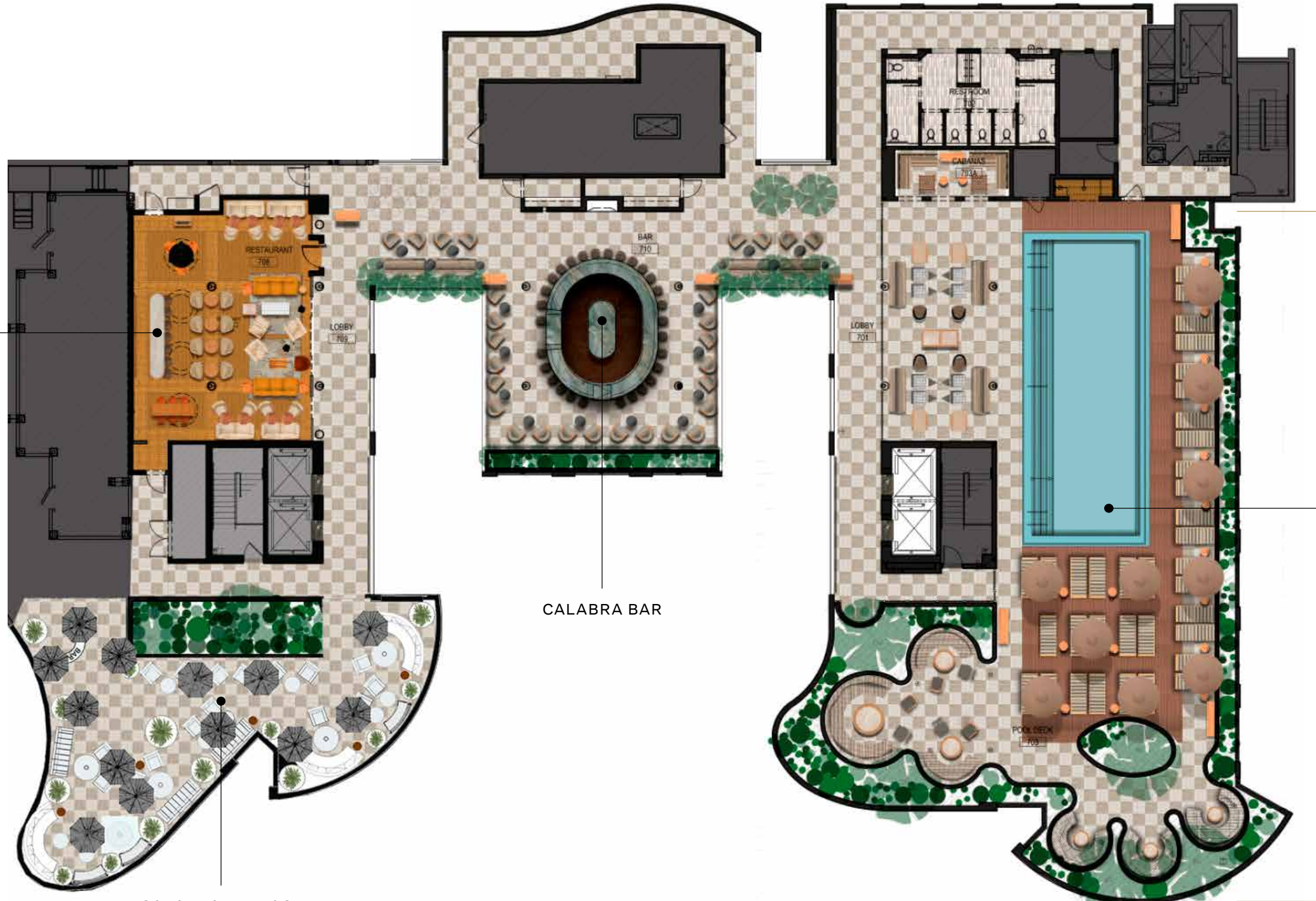


CALABRA

ROOFTOP BAR AND LOUNGE

WILSHIRE BLVD

CALABRA LOUNGE



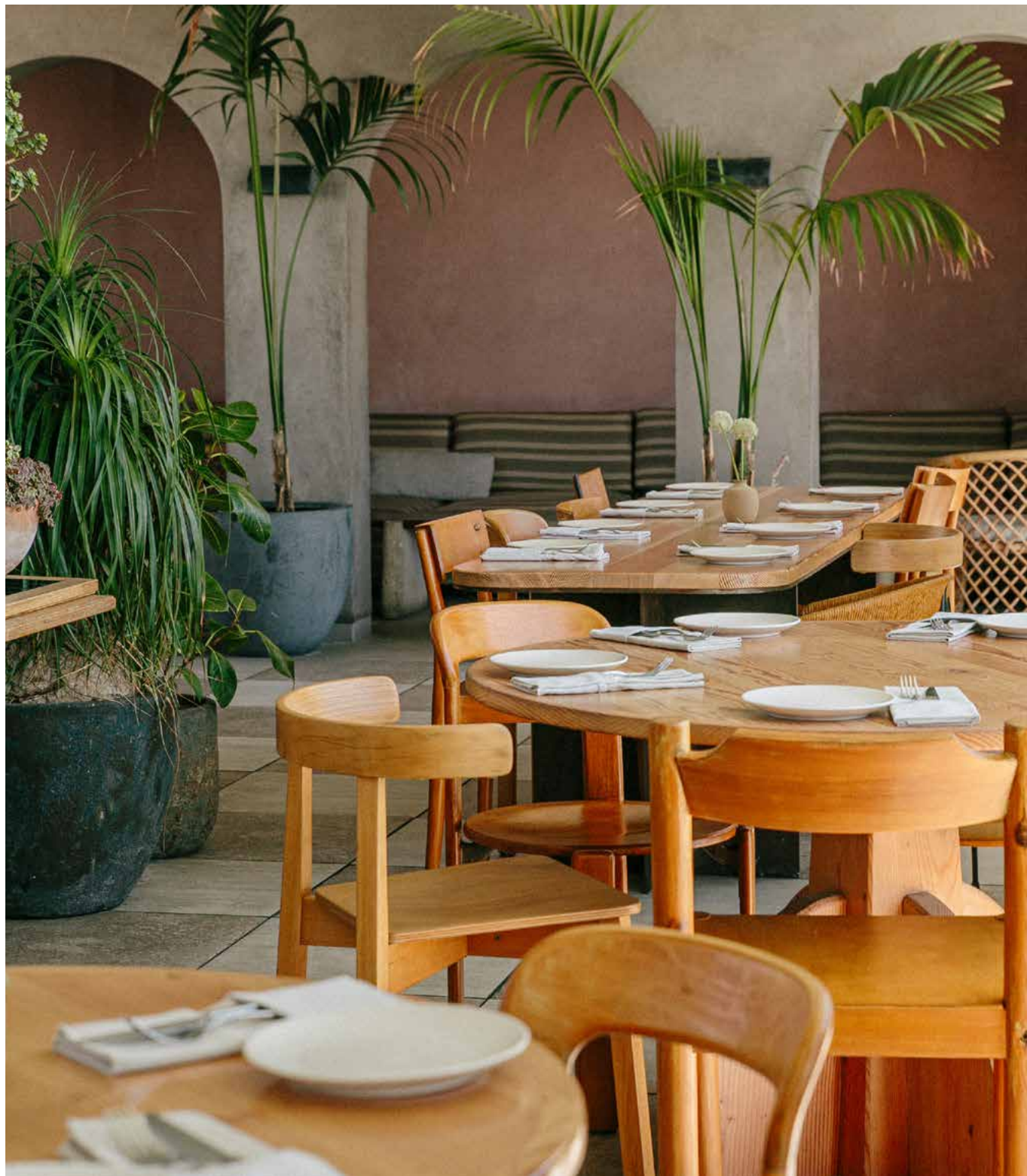
CALABRA BAR

CALABRA POOL DECK

CALABRA TERRACE

7TH STREET

CALABRA
ROOFTOP BAR AND LOUNGE



CALABRA
ROOFTOP POOL



SANTA MONICA PROPER SPACE CAPACITIES

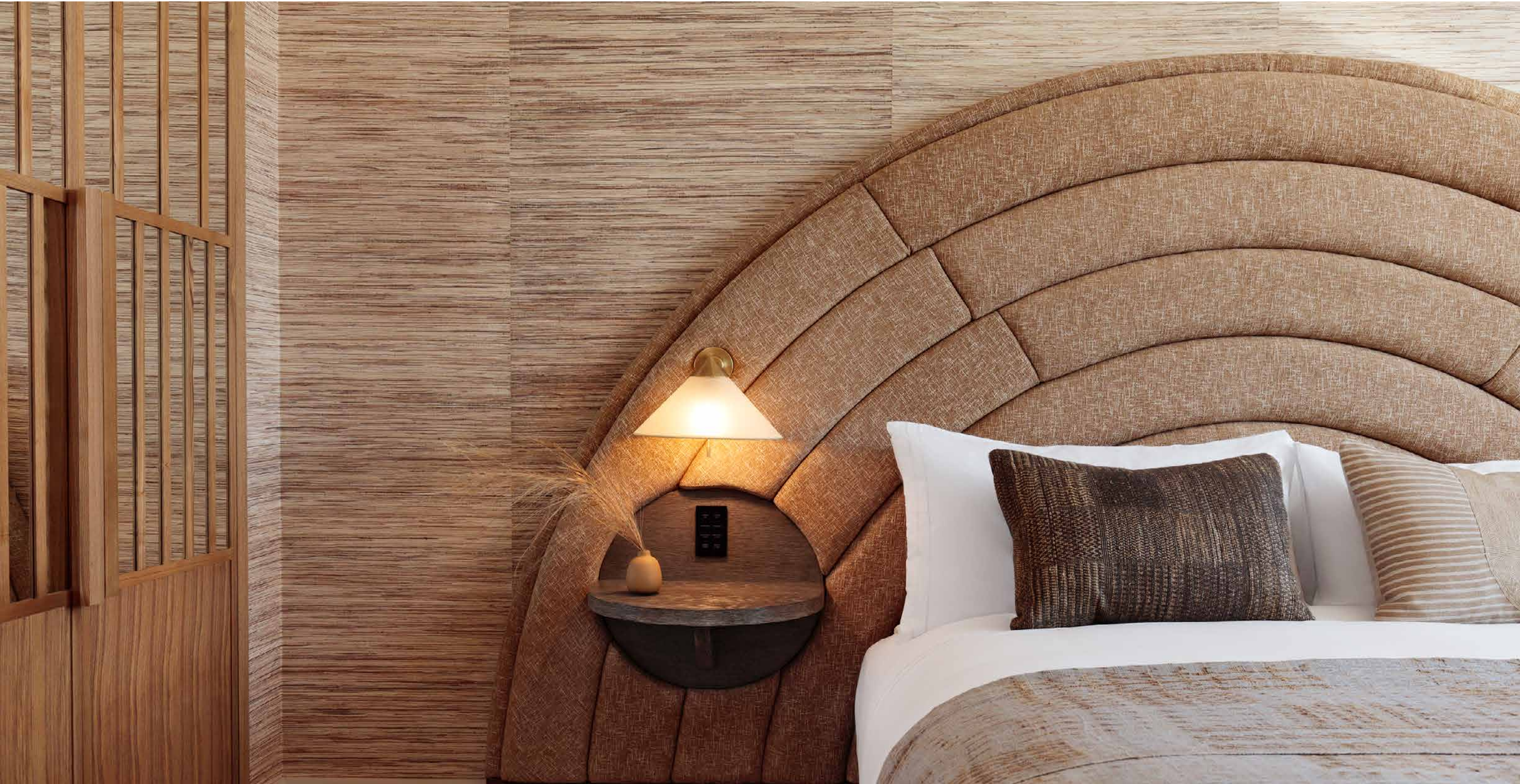
SMP.SALES@PROPERHOTEL.COM | 310.620.9990

ROOM	SQ. FT.	LENGTH	WIDTH	CEILING HEIGHT	NUMBER OF GUESTS							
					BANQUET	RECEPTION	U-SHAPE	THEATER	CLASSROOM	CRESCENT ROUNDS	HOLLOW SQUARE	BOARD ROOM
CANELA A BALLROOM	1,632	42'	42'	16'	80	100	40	108	70	60	50	30
CANELA B BALLROOM	2,162	36'	68'	16'	120	150	40	140	120	145	66	50
<u>CANELA A+B BALLROOM</u>	3,794	110'	39'	16'	210	250	100	250	200	156	70	95
<u>CANELA PRE FUNCTION</u>	1,352	57'	29'	16'	80	60	-	100	-	30	-	42
<u>CONVERGE</u>	957	38'	28'	9'	40	40	20	40	35	30	30	26
<u>SURGE BOARDROOM</u>	504	25'	27'	9'	-	-	-	-	-	-	-	14
<u>OLEA TERRACE</u>	2,241	44'	73'	-	90	120	-	120	-	-	-	-
<u>CALABRA LOUNGE</u>	1,175	43'	-	8'	30	70	-	-	-	-	-	25
<u>CALABRA BAR</u>	1,319	34'	-	-	-	80	-	-	-	-	-	-
<u>CALABRA POOL DECK</u>	5,165	103'	59'	-	-	200	-	-	-	-	-	-
<u>CALABRA FULL ROOFTOP</u>	7,727	149'	53'	-	-	500	-	-	-	-	-	-
<u>CALABRA TERRACE</u>	1,300	-	-	-	80	75	-	-	-	-	-	-
<u>SIETE</u>	1,600	97'	17'	9'	80	125	-	-	-	-	-	-
<u>PALMA RESTAURANT</u>	2,300	116'	33'	14'	-	140	-	-	-	-	-	-
<u>PASEO COURTYARD</u>	5,850	130'	45'	14'	-	200	-	170	-	-	-	-

PLEASE CLICK ON UNDERLINED ROOMS FOR A VIRTUAL TOUR

267 GUESTROOMS & SUITES

KELLY WEARSTLER INTERIOR DESIGN







LIVE PROPER • STAY PROPER

SMP.SALES@PROPERHOTEL.COM

310.620.9990