





Host your next event at Downtown L.A. Proper, where our reimagined Renaissance Revival landmark offers an extraordinary backdrop for unforgettable gatherings. Whether you're dreaming up a grand wedding, corporate team meeting, intimate dinner, or anything in between, our collection of design-driven venues can accommodate groups of all sizes. From panoramic views on the 5,000-square-foot Cara Cara rooftop to one-of-a-kind suites transformed from a vintage basketball court and indoor pool, our diverse venues blend timeless architectural detail with contemporary sophistication. Complete your vision with personalized menus, and the support of our Proper events team to ensure seamless planning from start to finish.

[REQUEST INFORMATION](#)

[TAKE VIRTUAL TOUR](#)

SPACE CAPACITIES

	Square Feet	Length	Width	Ceiling Height	Number of Guests									
					Seated	Standing	Banquet	Reception	U-Shape	Theater	Classroom	Conference	Hollow	Existing
BROADWAY BALLROOM	2,608	47'	56'	10'	80	150	80	120	28	100	38	60	40	—
CARA CARA LOWER WEST DECK	800	69'	13'	—	75	120	26	50	—	—	—	—	—	26
CABRILLO	2,445	43'	53'	14'	90	170	140	—	—	—	—	—	—	140
DAHLIA	509	30'	18'	14'	18	25	—	20	—	—	—	—	—	20
BASKETBALL SUITE	1,430	52'	15'	20'	20	30	8	20	—	—	—	—	—	—
POOL SUITE	2,777	54'	37'	10'	30	60	12	30	—	—	—	—	—	—

A high-angle photograph of a swimming pool. The pool's edge is lined with dark grey square tiles. The water is a clear, vibrant blue. In the foreground, a portion of a blue and white striped lounge chair is visible. To the right, a large, light-colored ceramic pot holds a healthy aloe vera plant with thick, pointed leaves. The ground around the pool is paved with a mix of dark grey and light grey square tiles.

OUR SPACES



DOWNTOWN L.A. PROPER HOTEL
OUR SPACES

CARA CARA LOWER DECK

A 5,000-square-foot rooftop venue featuring panoramic city views, an interior bar, built-in fireplace, pool-spa, and deck.

IDEAL FOR

Kick-off events, semi-private cocktail gatherings, group dinners, and launch events.

CAPACITY

Standing: 120 | Seated: 75

AMENITIES

Customized menus and cocktail selections from the award-winning culinary team.

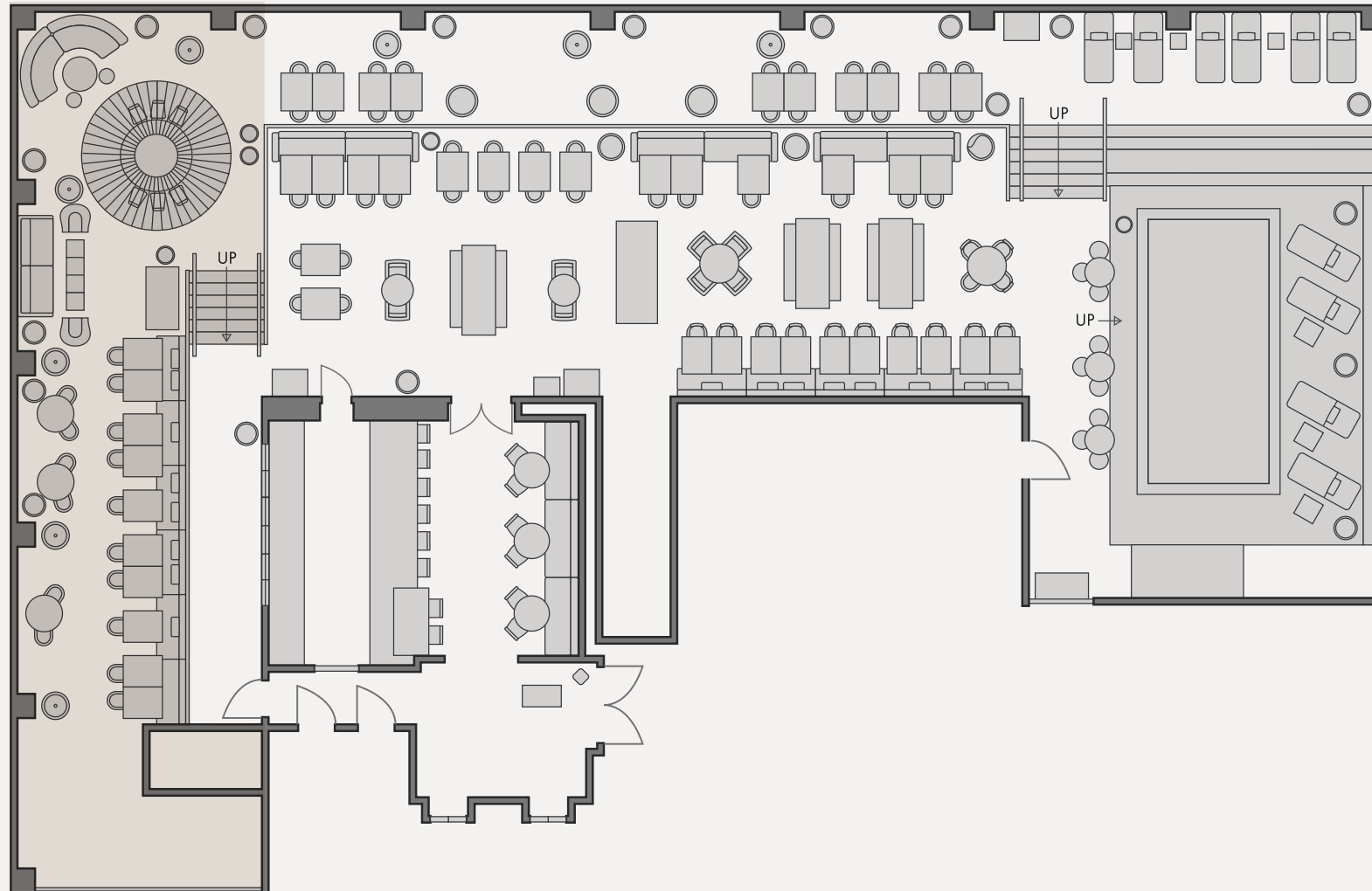
[TAKE VIRTUAL TOUR](#)

FLOOR PLAN

CARA CARA ROOFTOP

800 SQFT | 74 M²

LOWER DECK



DOWNTOWN L.A. PROPER HOTEL
OUR SPACES

BROADWAY BALLROOM

An elegant fourth-floor banquet hall with coffered ceilings, arched windows, and original stenciled designs, reflecting its history as a private social club's dining hall.

IDEAL FOR

Master classes, committee meetings, brand-building sessions, film screenings, and conference panels.

CAPACITY

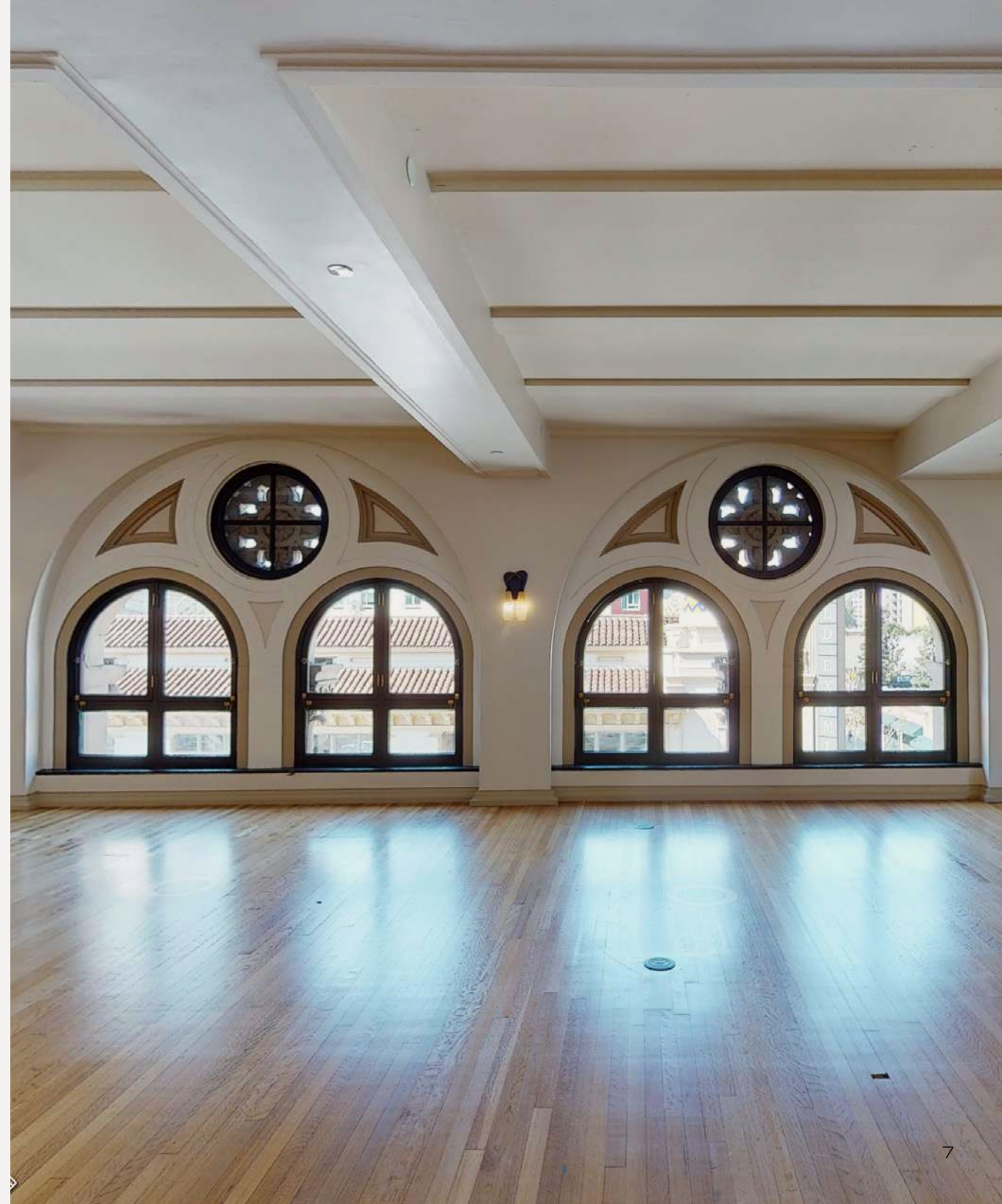
Standing: 150 | Seated: 80 (full rounds)

Classroom: 38 | Theater-style: 140

AMENITIES

Mounted Samsung Smart TV with A/V and streaming capabilities.

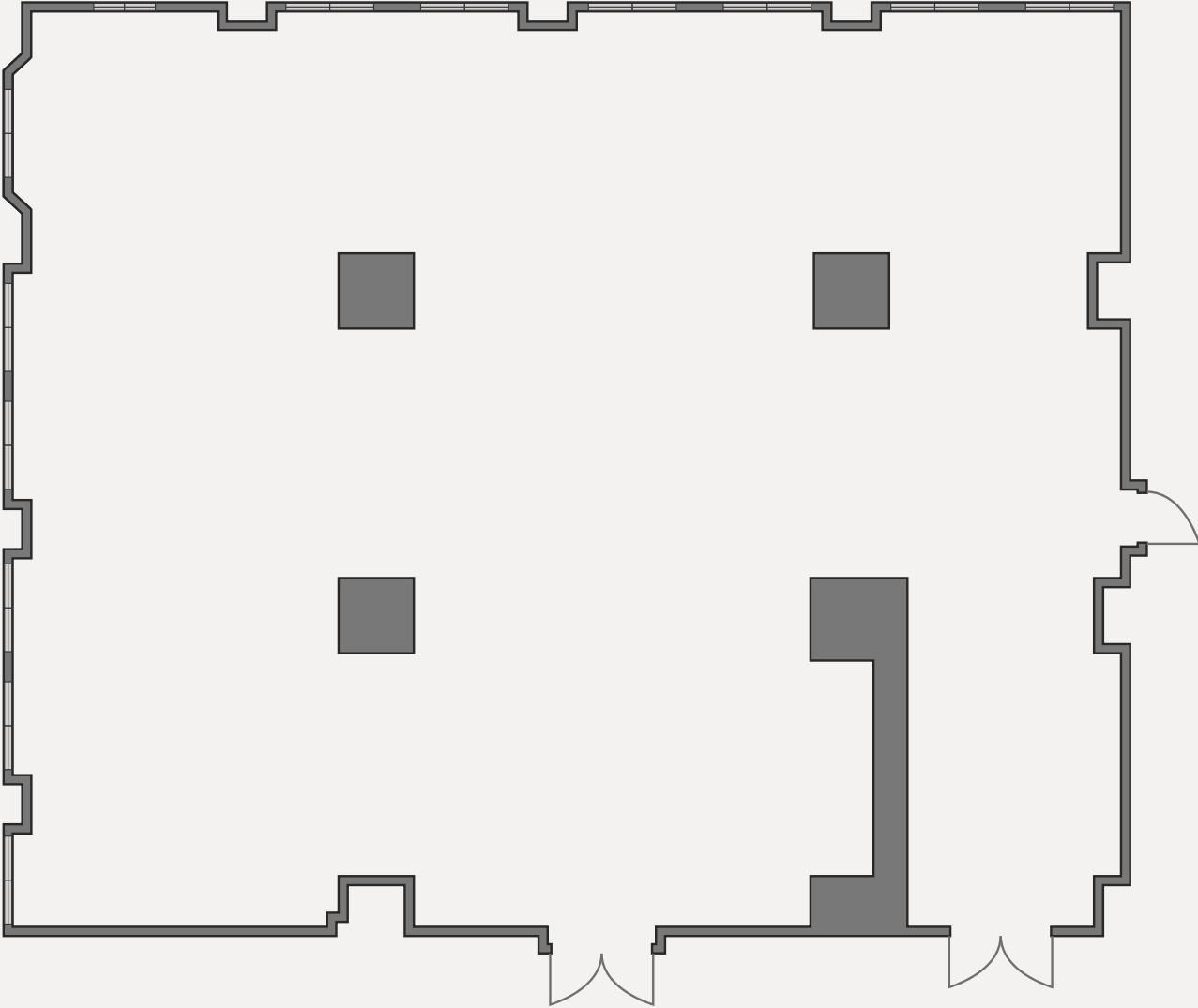
[TAKE VIRTUAL TOUR](#)



FLOOR PLAN

BROADWAY BALLROOM

2,608 SQFT | 242 M²





DOWNTOWN L.A. PROPER HOTEL
OUR SPACES

POOL SUITE

A unique 2,777-square-foot suite transformed from a historic indoor swimming pool, featuring five types of marble, pivoting glass doors, a kitchenette, half-bath, separate master bedroom/bath, and a ceramic mural by local artist Ben Medansky.

IDEAL FOR

Master classes, committee meetings, brand-building sessions, film screenings, and breakout sessions.

CAPACITY

Standing: 60 | Seated: 30 (full rounds)

AMENITIES

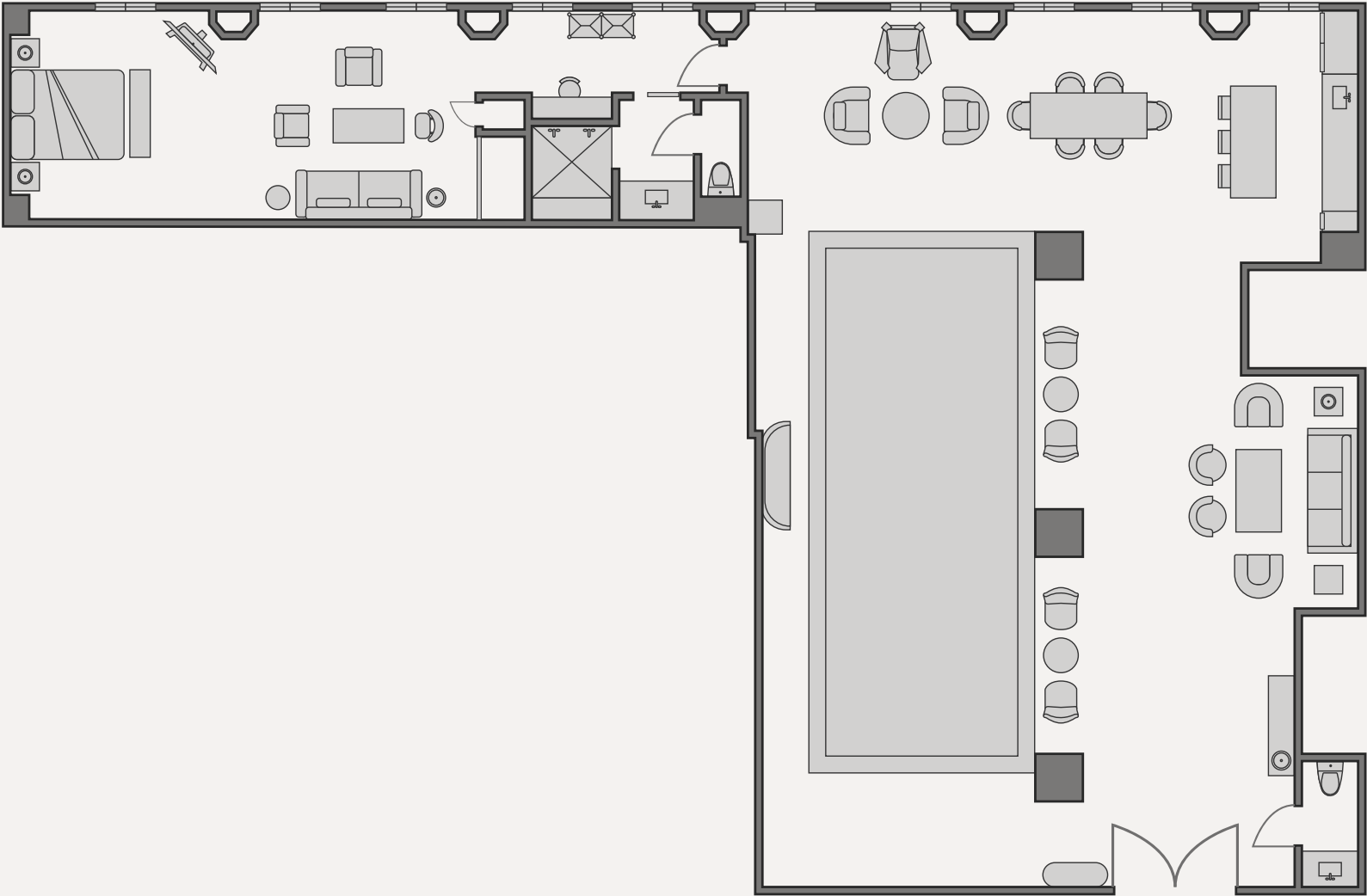
Mounted Samsung Smart TV with A/V and streaming capabilities.

[TAKE VIRTUAL TOUR](#)

FLOOR PLAN

POOL SUITE

2,777 SQFT | 258 M²



DOWNTOWN L.A. PROPER HOTEL
OUR SPACES

BASKETBALL SUITE

A 1,430-square-foot suite fashioned from a vintage basketball court, featuring double-height ceilings, geometric patterns, custom furnishings, an 84-inch HDTV with surround sound, kitchenette, guest bath, and generous living and dining areas.

IDEAL FOR

Master classes, committee meetings, brand-building sessions, film screenings, and breakout sessions.

CAPACITY

Standing: 30 | Seated: 20 with unique setup

AMENITIES

Multiple Samsung Smart TVs with A/V and streaming capabilities.

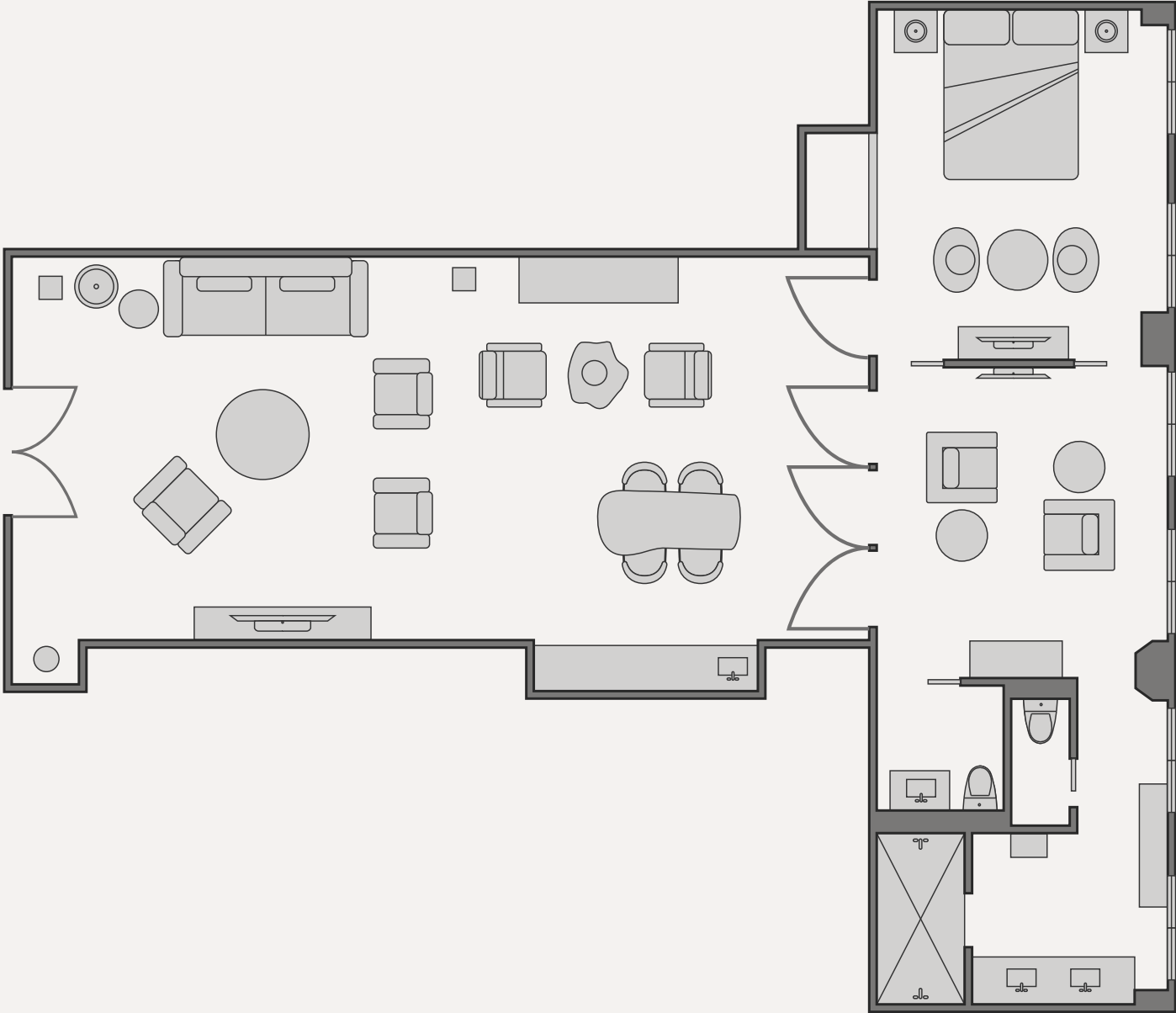
[TAKE VIRTUAL TOUR](#)



FLOOR PLAN

BASKETBALL SUITE

1,430 SQFT | 132.8 M²





DOWNTOWN L.A. PROPER HOTEL
OUR SPACES

CABRILLO

An expansive indoor-outdoor ground floor restaurant and lobby bar, serving vibrant Californian fare.

IDEAL FOR

Large group dinners, intimate cocktail parties, and various gatherings.

CAPACITY

Standing: 170 | Seated: 90

AMENITIES

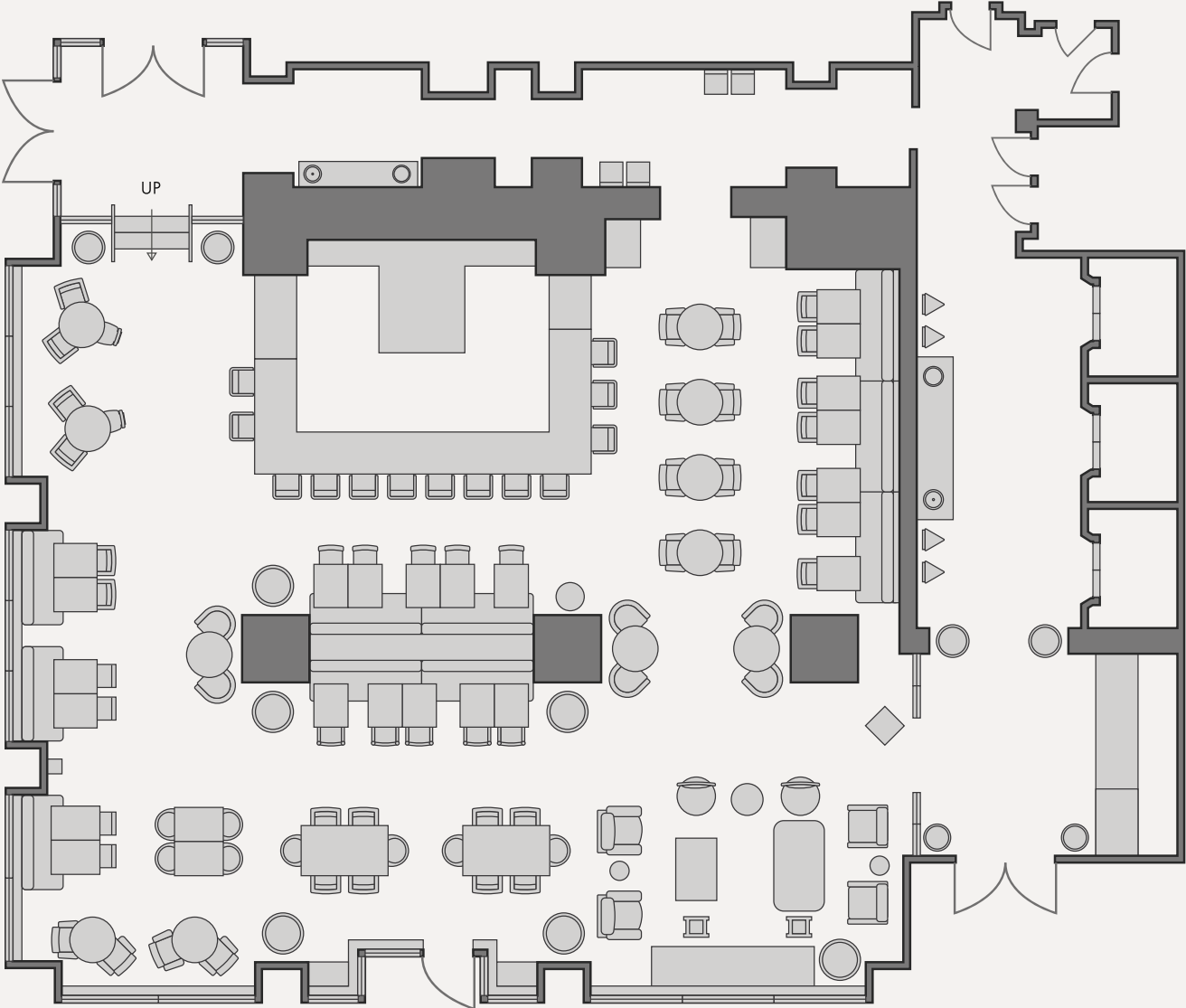
Customized menus and cocktail selections; in-house wireless microphone capabilities.

[TAKE VIRTUAL TOUR](#)

FLOOR PLAN

CABRILLO

2,445 SQFT | 227 M2



DOWNTOWN L.A. PROPER HOTEL
OUR SPACES

DAHLIA

An intimate private dining room adorned with a monolithic stained glass work by Judson Studios, featuring its own bar, patterned wall coverings, vintage tiles, and residential-style lighting.

IDEAL FOR

Master classes, committee meetings, breakout sessions, tastings, and meet & greets.

CAPACITY

Standing: 25 | Seated: 18

AMENITIES

Mounted Samsung Smart TV with A/V and streaming capabilities.

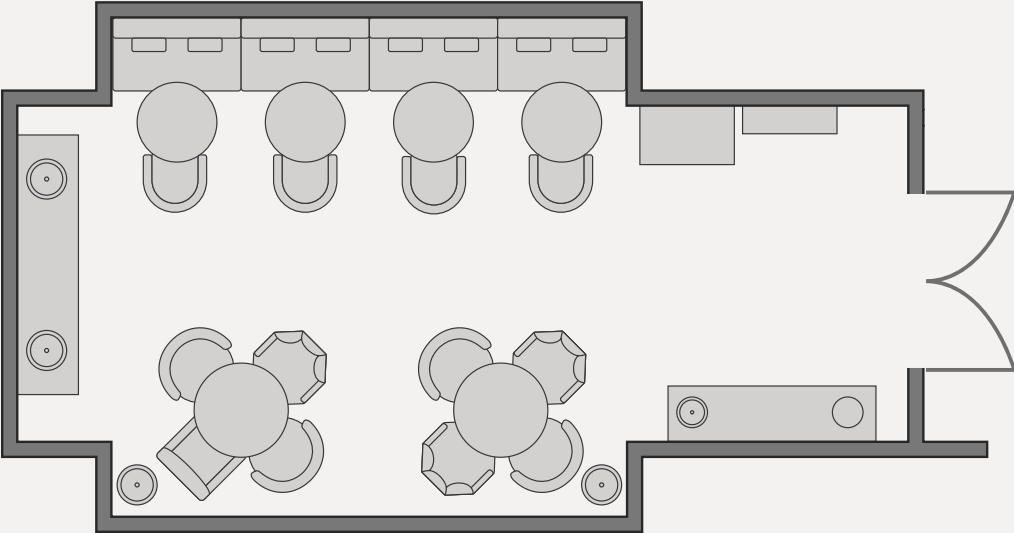
[TAKE VIRTUAL TOUR](#)



FLOOR PLAN

DAHLIA

509 SQFT | 47M²



DOWNTOWN L.A. PROPER HOTEL

CULINARY OFFERINGS



Culinary artistry takes center stage at Downtown L.A. Proper, with customized event menus that celebrate California’s vibrant flavors and seasonal ingredients—all envisioned through their acclaimed approach to thoughtful sourcing and elegant presentation found at Cabrillo and Cara Cara.

[EXPLORE OUR MENUS](#)

DOWNTOWN L.A. PROPER HOTEL

ACCOMMODATIONS



Create an ideal retreat for your guests with a group stay at DTLA Proper. Our 147 rooms and suites all showcase Kelly Wearstler's distinctive vision, featuring custom furnishings, vintage finds, and elevated amenities—with group blocks, hospitality suites, and connecting options that make planning effortless for any occasion.

[EXPLORE ROOMS & SUITES](#)

LIVE PROPER, STAY PROPER

